

pumps WARSON

Submersible Pump

1. Column. Steel A53 pipe, taper threaded, to assure a perfect assembly. Size in accordance to design.

1a. Column Pipe Coupling. Manufactured on suitable thickness to load deep columns safely.

2. Discharge Bowl. Designed to receive an extra-long bearing that connects the first intermediate bowl to the discharge bowl obtaining optimum stability. Including a plug to prevent the entry of sand to the bearing and to obtain greatest durability. Internal threaded NPT.

2 a. Plug.

2 b. Extra-long bronze bearing. Manufactured precisely.

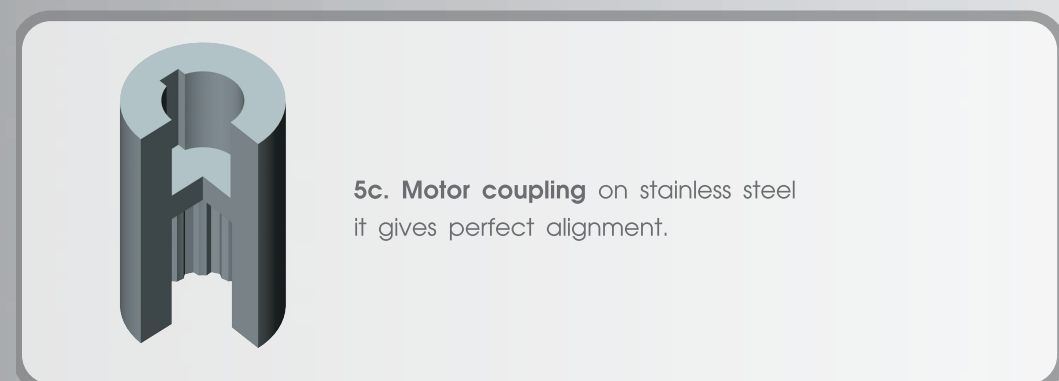
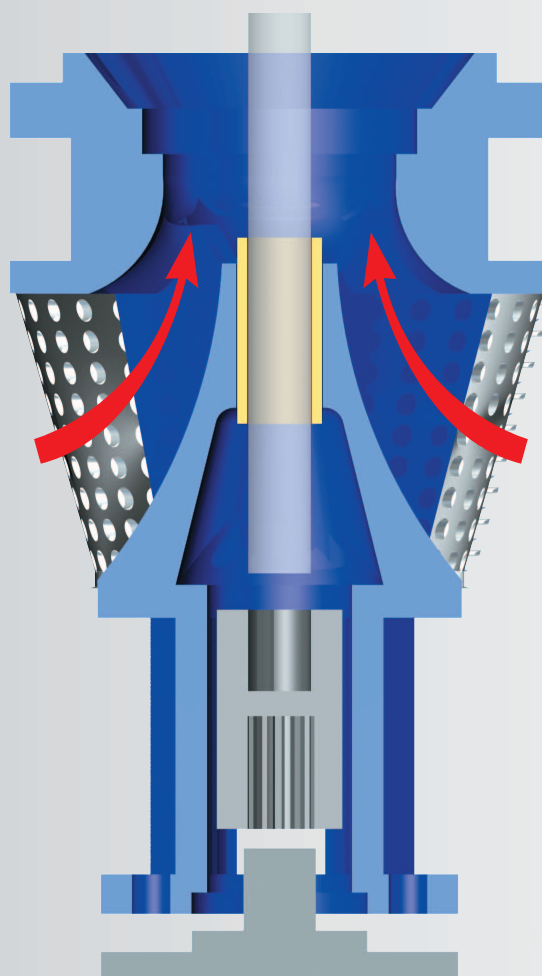
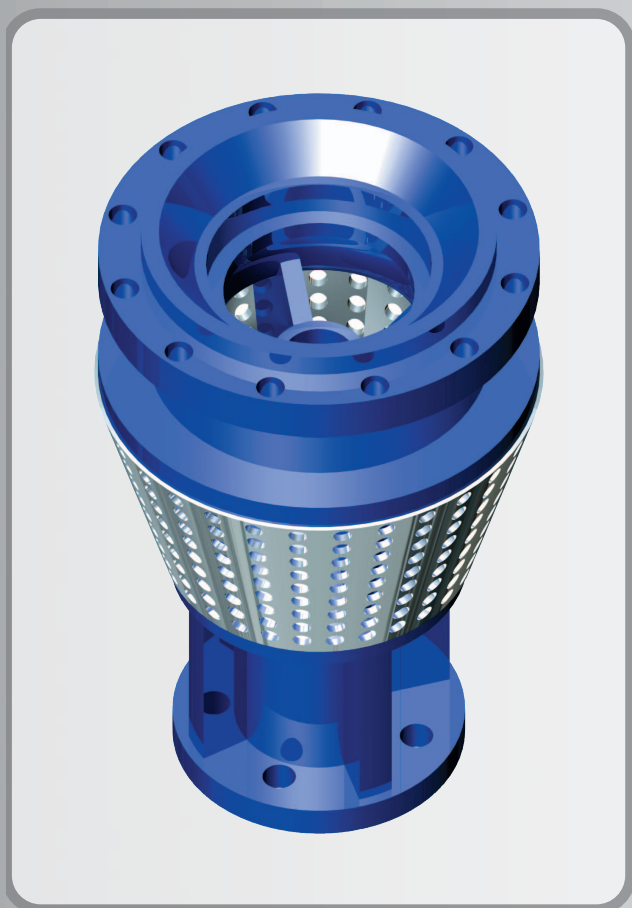
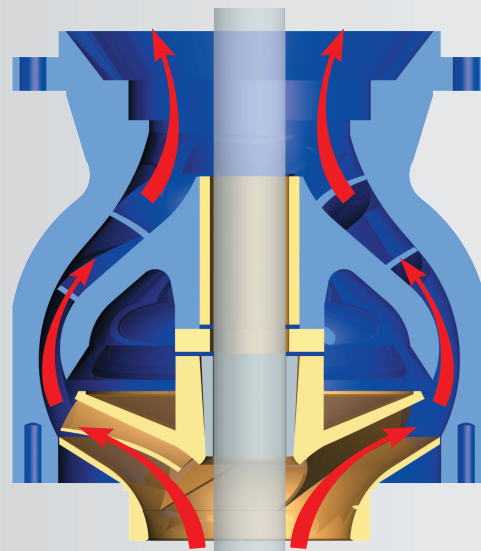
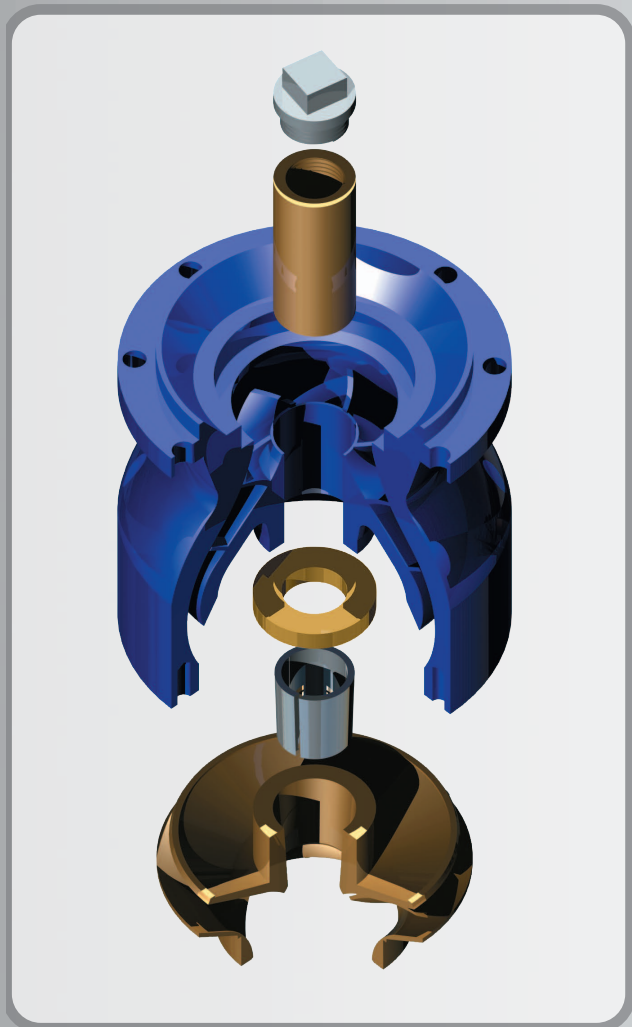
3. Intermediate Bowl. High efficiency design and precision manufactured to guarantee perfect pump assembly. Available on Cast iron A48 C30 or Ductile Iron C50 resistant to high pressures and abrasion. Smooth surface to increase efficiency. Fine finish painted externally with covering bases and epoxy paint on its final finish to give greater durability in harsh environments, with option to baked painting; and internally covered with enamel that reduces the losses in friction and increases the efficiency.

3a. Up-Trust Collar. (Between the first intermediate bowl and the impeller) Protects the impellers against possible up-trust at start up.

3b. Bronze Bushing to obtain maximum stability.

4. Impeller. Bronze, enameled in its interior (optional). It is designed in function of the flow and the TDH attaining the best efficiency point. The finished is made by hand, obtaining smooth surfaces and soft curves, which increase the efficiency. It's balancing is dynamic, so the operation is silent and without vibrations.

4a. Collet. It holds the impeller to the shaft. Manufactured precisely to avoid its disassembling while the pump is working. It can be provided in stainless steel.



5c. Motor coupling on stainless steel it gives perfect alignment.

5. Suction bowl with coupling integrated to the motor. Single piece. With extra-long bronze bushing for greater stability. With enough space for the motor coupling to facilitate the assembly of the pump. Made of ductile iron to obtain a strong union between pump and motor. Water entrance area sufficiently wide with enough space for the submersible cable.

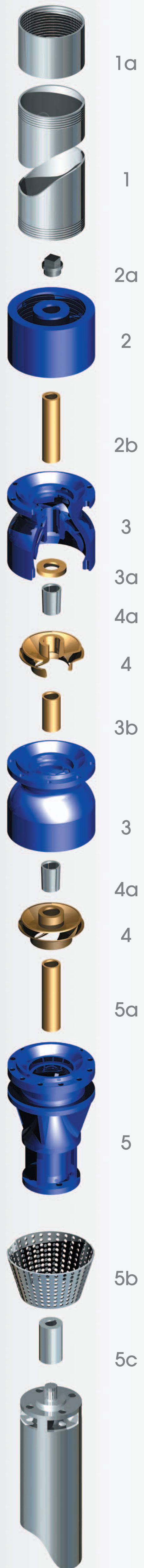
5a. Bronze bushing for greater stability.

5b. Stainless steel strainer to avoid the entrance of solids with enough space for the correct flow of water into the suction.

5c. Motor coupling on stainless steel gives it perfect alignment.

6. Pump's shaft. Made of stainless steel guaranteeing a long life and an optimal corrosion resistance. Perfectly aligned to avoid vibration with an adequate diameter according to the pump power.

The pump can be manufactured in different materials: cast iron (standard and / or nodular), stainless steel, bronze (in its different alloys), according to the customers needs and requirements.





WARSON strives to produce quality products.

Gages: These patterns, called guardians of quality, reject or accept each element produced. This is the only possible way we can integrate the unity called WARSON PUMP.

Hydraulic Laboratory: This Hydraulic Laboratory certifies the equipment you acquire works correctly to the point of operation requirements and specifications for which it was designed.

The professionalism of our delivery as well as the quality of our pumps is the result of having planned, projected, and developed a company, which specializes in manufacturing of submersible and vertical pumps.



When you meet our clients, they project confidence, and you will know that they have changed to Warson because they have confirmed that Warson Pumps produce this equipment for the complete satisfaction of their necessities and requirements. In addition, our clients know that when they require technical assistance, there is a network of distributors that cover our sales points in North America, Mexico, Central and South America.

That is why we invite you today to be part of our group of satisfied customers through the acquisition or renovation of your pump equipment.



The Warson technology counts with:

Patterns Workshop

For the patterns creation skillful hands are required, that mold on wood, resin and aluminum all specialized technology.

Foundry

With modern technology, high quality raw materials and alloys that give world-wide class specifications with a suitable sizing that allows high productivity in the manufacturing process.

Machinery Workshop

Computerized numeric control turning machine which precisely processes identical pieces allowing to obtain concentrically elements with a perfect alignment.

Transmission

In the submersible pump, the power is transmitted through an electric cable, which is certified, allowing us to correct isolation to avoid a short circuit, with suitable calibers, low loss of voltage and flat type, which has a size advantage when introducing the pumping equipment in reduced spaces.

All of the elements that integrate our equipment are manufactured under one quality pattern, one philosophy of excellence in the service and optimized efficiency that assure the highest performance with the lowest consumption of energy that is demonstrated in the continuous work of thousands of installed equipments.

empresas suárez s.a de c.v

Av. México-Japón No. 156
Ciudad Industrial
Celaya, Guanajuato, México. 38010

Tel./Fax. +52 (461) 611 64 55

World Wide
<http://www.warson.com>

CONTACT US
e-mail: ventas@warson.com

pumps
WARSON
Submersible Pump