

DC5150 TECH SPECS

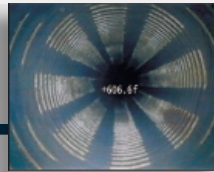
DC5150 DUAL CAM

Downhole and side-view color video inspection system for water well, boreholes and monitor wells



Full-function joystick operates camera view, controls, lights & rotation.

Downhole



Side-View



The DC5150 DUAL CAM provides a comprehensive, detailed survey of water wells, boreholes, underground storage tanks and mine shafts measuring 3"-30" in diameter to depths of 5,000 feet. In addition to the standard downhole view, it offers a side-view perspective with continuous 360° rotation (and no external moving parts).

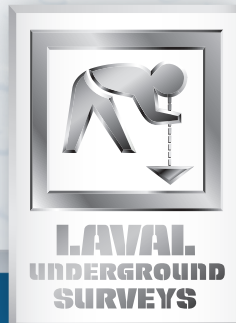
- Provides sharp color images with two lenses
- Specially designed long-life L.E.D. lighting
- Easily retrofit to single conductor video inspection systems
- Standardized cablehead allows interchangeable use of Laval cameras
- Slimmer design, lightweight and easy to handle
- Suitable for high temperature environments
- Sealed housing prevents condensation and water intrusion
- Joystick control (see photo above) for easy operation and full-function, one-hand operator control.

APPLICATIONS

Suited for the groundwater industry, gas, oil and mining companies, public works officials, miners, environmentalists and remediation sites, helping pinpoint problems in:

Water Wells

- Locate corroded casings, infiltration, obstructions, offset casings and encrustations
- Find lost tools and pump parts
- Verify success of repairs and cleanings
- Analyze gravel packs and casing damages
- Determine if wells can be rehabilitated



Boreholes/Monitor Wells

- Determine chemical/mineral content from soil coloration
- Analyze geologic strata/ground formations
- Detect damage in underground petroleum storage tanks and piping, drilling fluid disposal pits, injection wells, brine evaporation pits and retired gas and oil production wells
- Provide visual proof of compliance with government regulations

CAMERA SPECIFICATIONS

Camera diameter: 2.35 inches (60mm) O.D.

Overall camera length: 24.25 inches (660mm)

Housing: Stainless steel

Lens: Scratch-proof sapphire glass viewing port

Power requirements: 100-200 volts DC at 50 watts (at maximum brightness)

Total camera weight: under 14 lbs. (6.5kg)

Pressure rating: Pressure tested and waterproof to 2,500 psi

Camera connector: Water-blocked; LUS cablehead with UHF coaxial connector

Scanning system: 525 line, 60 Hz NTSC or 625 line, 50 Hz PAL standard

Operating temperature: 0° to 65° C (32° to 150°F)

Remote functions: Camera view (select downhole or side-view); Rotation (clockwise or counter-clockwise); Fully adjustable lighting

Note: Specifications subject to change. Confirm when ordering.